



NATURAL
HISTORY
MUSEUM
OF THE LESVOS
PETRIFIED FOREST

EDUCATIONAL DEPARTMENT

Tel. 0030 2251047033, 0030 22530 54434

e-mail: lesvospf@otenet.gr

www.lesvosmuseum.gr



United Nations
Educational, Scientific and
Cultural Organization



Lesvos Island
UNESCO
Global Geopark

Let's discover the volcanoes

Read the definitions and put the words in the correct place in the figure below. Afterwards, color it!

Magma = the molten rocks inside the earth

Lava = the molten rocks when they come to the surface of the earth

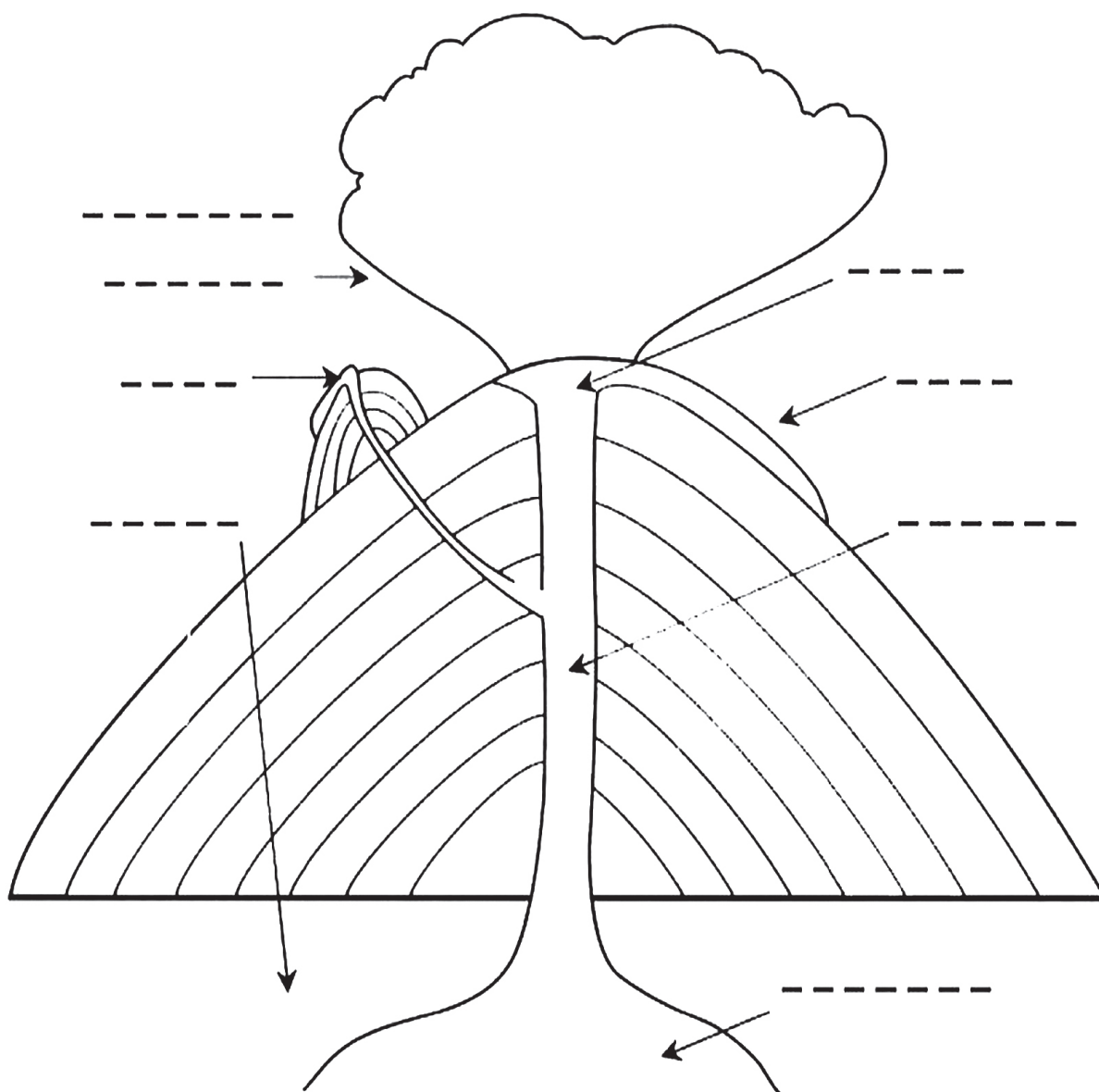
Volcanic ash = the smallest rock fragments ejected from volcanoes

Magmatic chamber = the chamber containing the magma deep in the earth's crust

Main vent or Exit vent = the conduit through which the magma passes

Crater (Exit) = the point on the earth's surface where volcanic materials come out

Side or secondary exit = the exit of the magma from some of the volcano's sides



Right or Wrong?

Read the following questions and note R for the right ones
and W for the wrong ones.

1.	All volcanoes are conical-shaped mountains.	
2.	The scientists who study the volcanoes are called volcanologists.	
3.	The center of the earth is fluid.	
4.	Lava is called the magma when it comes out on the surface of the earth.	
5.	The vineyard and other kinds of crops thrive in volcanic soils.	
6.	Santorini is an active volcano in Greece, part of the Aegean volcanic arc.	
7.	Caldera is a huge circular hollow at the top of a volcano, formed after a large volcanic eruption when the cone of an active volcano collapses.	
8.	The volcanoes that we find today in the island of Lesbos are active.	
9.	In Lesbos we find impressive volcanic formations.	
10.	The creation of the Lesbos Petrified Forest is connected with the intense volcanic activity in the area 18.5 - 16, 5 million years ago.	

Total of right answers!

Congratulations!

Now it is time to share the above information with your friends and family!

Answers: 1.W, 2.R, 3.W, 4.R, 5.R, 6.R, 7.R, 8.W, 9.R, 10.R