

## Educational Activity

# Shadow Puppet Theatre starring the animals of the Petrified Forest of Lesvos

Create your own Shadow Puppet Theatre and put on your own show with the animals that lived in the Petrified Forest of Lesvos 20 million years ago.

Use materials that you can easily find in your house, ask an adult for help and follow the simple steps. Within just a few minutes, you are going to make your own Shadow Puppet Theatre for endless games.

### Materials

- Box lid (ideally from a shoe box) or a cardboard box
- Thin white paper or wax paper
- Straws, craft sticks, or skewers
- Bubble wrap
- Tape
- Scissors, cutter
- Ruler
- Pen or marker
- Flashlight or a desk lamp



### Instructions

#### Puppets

1. Print the template with the figures of the animals of the Petrified Forest of Lesvos (You can use thin cardboard on which to print or glue the figures)
2. Cut out carefully the figures
3. Cut the skewers in different sizes



4. Place the skewers on the back of the figures. Tape them horizontally on the figures that will be part of your scenery (left picture), and perpendicular on the figures you would like to move during your show (right picture)



### **Extra Tips!**

- **Would you like to enrich your scenery?**

Print and add as scenery elements the trees that lived in the Petrified Forest of Lesvos, like gigantic sequoias, palm trees, pine trees, tropical walnut trees.

- **Do you enjoy drawing?**

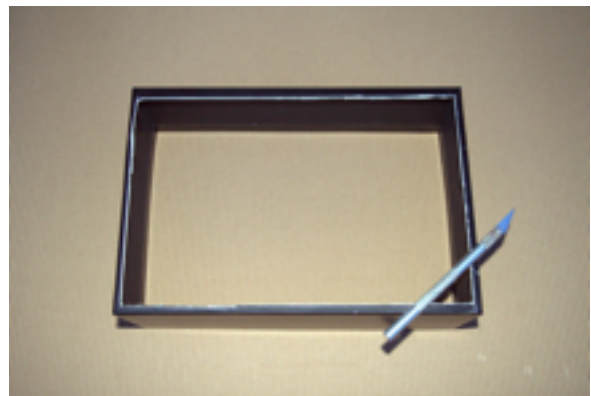
Create your own unique puppets by sketching the animals and trees of the Petrified Forest of Lesvos.

## Screen

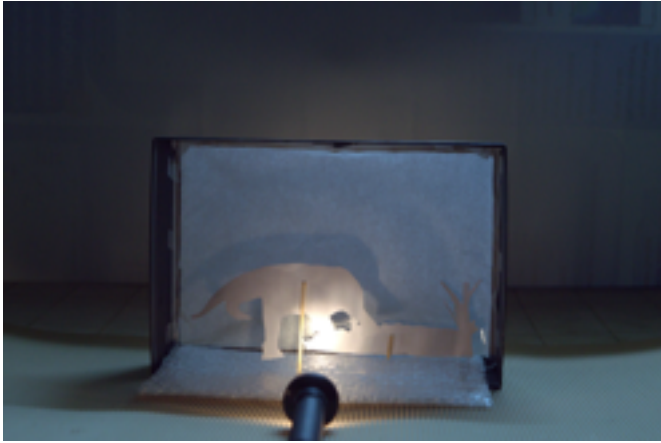
1. Draw a rectangle upon the box lid



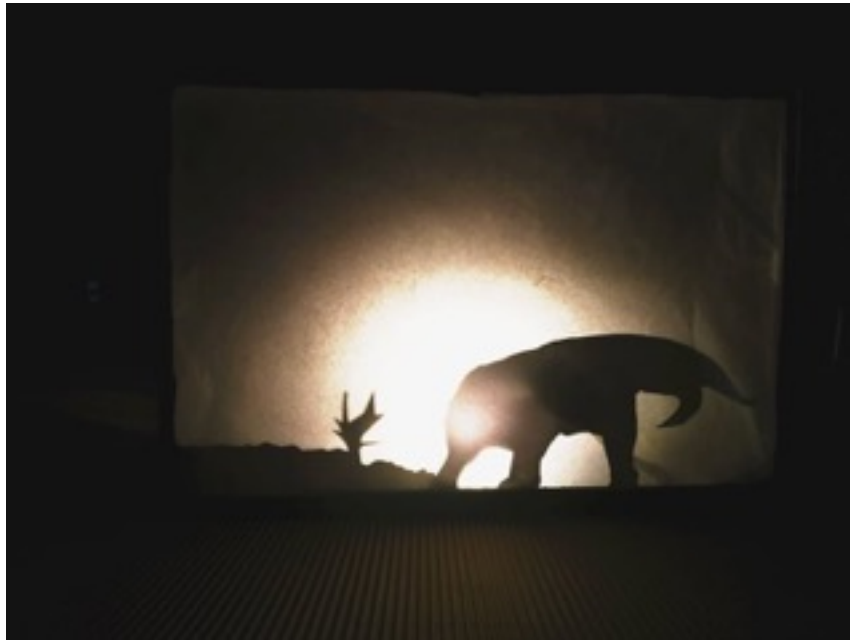
2. Ask an adult for help to cut out the rectangle (in case you have a whole box, cut out both its sides)
3. Tape the thin white paper over the opening



4. If you want you can use bubble wrap behind the screen in order to set some puppets as scenery elements
5. Position a flashlight or a desk lamp behind the screen



Your Shadow Puppet Theatre is ready!  
It is time to put on a show!  
Let your imagination travel 20 million years ago!  
How would the Petrified Forest of Lesvos look like back then? Which animals do you spot? How  
do they move? What are they doing? What are they eating?  
Write your very own script!



A Shadow Puppet Theatre starring Deinotherium, a large prehistoric relative of modern-day elephants that lived in Lesvos 19 million years ago.

Set up your screen, light your lamp, and perform!  
Have fun!

**Would you like to learn more about the plants and animals that lived in Lesvos 20 million years ago?**

Explore the Museum's website and download the educational leaflet "Get to know the animals of the Petrified Forest".